

Adolescent Intervention Program

The Adolescent Intervention Program provides drug and alcohol awareness classes for first time offenders. The three week program meets Tuesday evenings from 7:30 until approximately 9:15PM. Participants must attend three weeks consecutively. Classes include current information on the effects of drug use, insight from those recovering from their own addictions, videos and dramas. Class sizes are limited. There is a \$50 charge for the series of classes, payable the first night of the classes.

Please note:

Classes begin at 7:30PM. If you are late, you will not be admitted and will not receive credit for attending.

Dress modestly. No sag, baggies or revealing clothing.

Cell phones must be turned off during meetings.

You must be sober to attend classes. If you arrive under the influence, the police will be called and you will be arrested.

If you have previously attended these classes, you do not qualify to attend them a second time.

Directions

Sewickley Area - Take Rt. 65 south past the junction with Interstate 79 and continue on past Camp Horne Road (BP Station on left). At the third light following Camp Horne Rd. (2nd and 3rd lights are very close together), make a left onto Fisk Ave. Proceed two blocks, then make a left onto Florence Avenue. At the stop sign, the building is directly ahead of you.

Airport Area - Take Interstate 79 North to the Emsworth/Sewickley Exit and follow the signs for Rt. 65 South (Emsworth Exit). Take Rt. 65 South past Camp Horne Rd. At this point, you can follow the directions above from Sewickley (above).

Wexford and north - Take Interstate 79 South to Interstate 279 South to the Bellevue/West View Exit. Turn left at the end of the ramp onto Union Avenue. At the second light, turn right onto California Avenue. The DoorWay is on the left at the bottom of the hill following the second stop sign.

Pittsburgh - Take Rt. 65 North. Follow Rt. 65 North past the McDonald's in Bellevue (on left). Go straight at the light at Elizabeth Ave. At the next light, make a right onto Fisk Ave. Proceed two blocks, then make a left onto Florence Avenue. At the stop sign, the building is directly ahead of you.

North Hills - Take Rt. 19 South into West View. Make a right onto Highland. Turn left at the "T" intersection past Highland Country Club. Make a right at the fourth light onto California Avenue. The DoorWay is on the left at the bottom of the hill following the second stop sign.

THE DOORWAY

WHERE PEOPLE GET A SECOND CHANCE

10 CALIFORNIA AVE. & 520 ORCHARD AVE.

PITTSBURGH, PA 15202

(412)734-9123 • (412)734-4580 FAX

WWW.DOORWAY.ORG • JERDNER@DOORWAY.ORG

THE DOORWAY

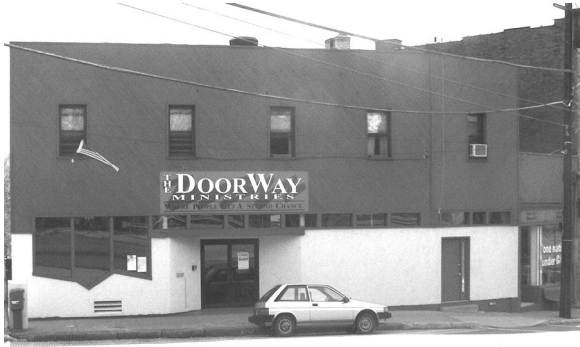
WHERE PEOPLE GET A SECOND CHANCE

Adolescent Intervention Program



The DoorWay

is an interdenominational ministry providing help and promoting healing, hope and purpose to youth and in-crisis individuals within the community by reaching out through prevention, education, crisis intervention and recovery programs without discrimination.



History

In 1981, Joyce Erdner became president of "Together With Youth", an organization dedicated to fighting alcohol and other drug addictions among youth. She worked with St. Francis Hospital and local Judges to design the Adolescent Intervention Program in 1982. The program has been used throughout the United States, as well as in other countries. In 1991, C.T.R. Systems, Inc., generously donated a building to the organization, which then merged with The DoorWay. The Avalon site was provided with the condition that the property be used to help give people a second chance.

Adolescent Intervention Program

The Adolescent Intervention Program is a service that The DoorWay provides so that court designated offenders can complete their assigned obligation. **It is the offender's responsibility** (not their parent's, relative's or friend's) **to schedule class times, complete the classes within the determined period and to adhere to the rules.** It is not The DoorWay's responsibility to notify offenders when they fail to schedule or complete classes in a timely fashion. Anyone failing to schedule, complete their classes or follow the rules will be terminated and returned to the court, probation officer or case worker which made the assignment.

Rules for the Adolescent Intervention Program:

1. Dress appropriately. Baggies, inappropriate, low cut or revealing clothing is not permitted. 'Inappropriate' clothing is determined by The DoorWay staff.
2. The program consists of 3 classes which must be completed consecutively. If you miss any of the classes, you will need to reschedule and take all 3 classes again.
3. Classes begin at 7:30 PM. You must be here before the class begins, or you will be sent home and will not receive credit for the class.
4. You must come with the attitude, "I am here because I want to be here and I am ready to participate."
5. You must respect the staff and volunteers at all times. Speak politely and appropriately to everyone at The DoorWay.
6. No smoking in The DoorWay.
7. Do not make or receive any personal calls during the meeting. Cell phones must be turned off while you are here.

If you agree to follow to these rules, complete the following information legibly and bring it with you to your first scheduled class time.

Name _____ Date _____

Address _____

Phone _____ Age _____

Judge/PO _____ Parent's Signature _____